



2025

MATTRESS CATALOG



www.berfa.com.tr

info@berfa.com.tr

+90 501 123 1110

+90 530 152 0038

Bamboo Classic

"In addition to the high-density Bondex foam used on both sides of the mattress, the foam and fiber used in the quilting ensure a high-quality sleep."



Supportive Foam

In this model, 2 cm thick 50 DNS Bondex foam is used on both sides. This ensures that both sides of the mattress have the same level of firmness. The high-density 50 DNS Bondex foam evenly distributes the weight applied to the mattress across its entire surface. Both sides of the mattress can be used with complete confidence.



Quilted Foam

In the Bamboo Classic model, the quilted foam used on the top surface enhances the definition of the patterns. The foam within the quilting adds a sense of softness that will make you feel truly comfortable.

Fabric

The special quilted roll foam and fiber used in the fabric of the Bamboo Classic have placed the mattress in the medium-firm category.



Bamboo Classic

Technical Details



1.	Layer Fabric
2.	Layer 90 gr/m² Density Thermobond Fiber
3.	Layer 1.5 cm/m² density roll foam
4.	Layer 14 gr/m² density interlining
5.	Layer 2 cm Bondex foam with 50 DNS density
6.	Layer Hard felt (0.5 cm) with a density of 1000 gr/m²
7.	Layer For single beds, 2.20 mm – for double beds, 2.38 mm Hercules mattress springs (14 cm).
8.	Layer 0.5 cm hard felt with a density of 1000 gr/m²
9.	Layer 2 cm Bondex foam with a density of 50 DNS
10.	Layer 14 gr/m² density interlining
11.	Layer Thermobond fiber with a density of 90 gr/m²
12.	Layer Fabric

Total Mattress Height 21 cm (± 1 cm)

Single Size Dimensions

90 x 190
90 x 200
100 x 200
120 x 200

Double Size Dimensions

140 x 190
140 x 200
150 x 200
160 x 200
180 x 200

Super Bamboo

In addition to the elegance of bamboo, the extra foams used in the mattress maximize its durability. The richness of coffee tones in the velvet combined with the sophistication of bamboo...



Supportive Foam

In the pad section of this model, 2 cm thick 50 DNS Bondex foam is preferred. Similarly, 2 cm thick 50 DNS Bondex foam is used on the bottom surface of the mattress. This ensures that both sides of the mattress have equal firmness. The high-density 50 DNS Bondex foam evenly distributes the weight applied on the mattress across its entire surface.



Quilted Foam

The quilted foam used on both surfaces of the Super Bamboo enhances the clarity of the patterns. At the same time, the foam within the quilting provides a softness that will make you feel comfortable.



Fabric

The special quilted roll foam and fiber contained in the fabric used in the Super Bamboo create a unified structure.



Super Bamboo

Technical Details



1.	Layer Fabric
2.	Layer Thermobond fiber with a density of 90 gr/m ²
3.	Layer Roll foam with a density of 1.5 cm/m ²
4.	Layer 14 gr/m ² density interlining
5.	Layer 50 DNS/m ² density Bondex foam, 2 cm
6.	Layer 1000 gr/m ² density hard felt (0.5 cm)
7.	Layer 2.20 mm for singles – 2.38 mm for doubles Hercules mattress spring (14 cm)
8.	Layer 1000 gr/m ² density hard felt (0.5 cm)
9.	Layer 2 cm Bondex foam with 50 DNS/m ² density
10.	Layer 14 gr/m ² density interlining
11.	Layer 90 gr/m ² density Thermobond fiber
12.	Layer Fabric

Toplam Yatak Yüksekliği 21 cm (± 1 cm)

Single Size Dimensions

90 x 190
90 x 200
100 x 200
120 x 200

Double Size Dimensions

140 x 190
140 x 200
150 x 200
160 x 200
180 x 200

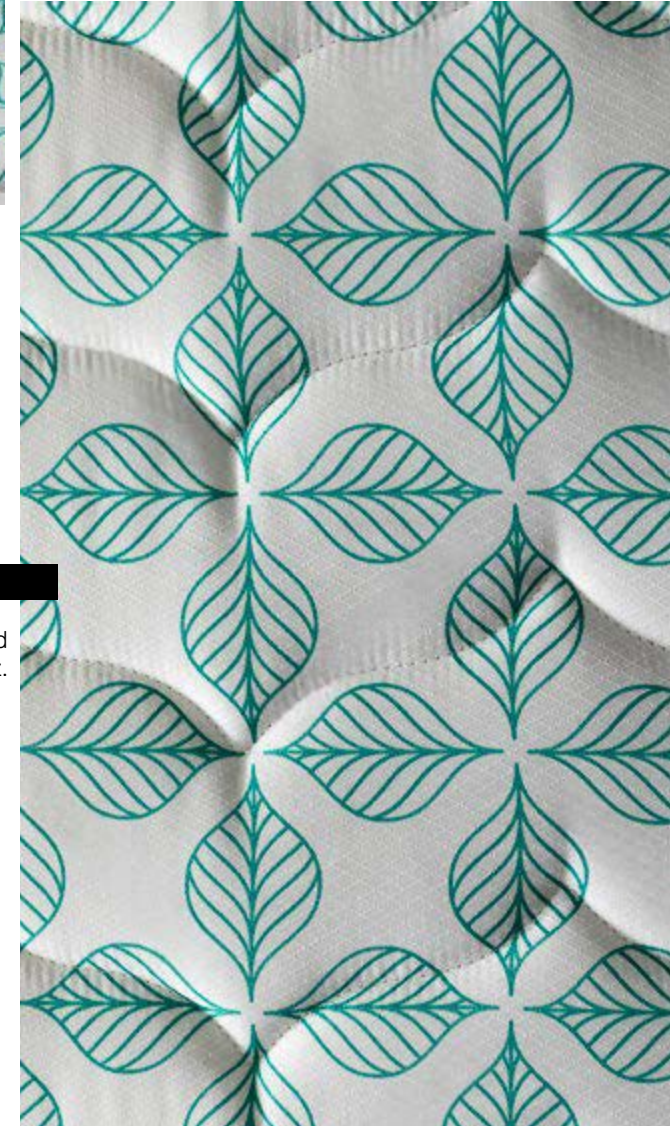
Super Bamboo

Compared to spring mattresses, foam mattresses are especially preferred in Europe and America. The reason is that foam mattresses have a much longer lifespan.



Supportive Foam

This model features 12 cm thick 50 DNS foam. The high-density 50 DNS foam evenly distributes the weight applied on the mattress across its entire surface. Both sides of the mattress can be used with confidence. The quilted foam and fiber used on the top surface of Dr. Therapy enhance the clarity of the patterns. At the same time, the foam and fiber inside the quilting provide a softness that will make you feel comfortable.



Fabric

Made from jacquard fabric, it is more durable compared to knitted fabrics. Jacquard fabric does not pill, bubble, or fuzz.



Dr. Therapy

Technical Details



Hard
10
9
8
7
6
5
4
3
2
1
Soft

1. Layer Fabric

2. Layer 2.20 mm for single beds – 2.38 mm for double beds Hercules mattress spring (14 cm)

3. Layer 1.5 cm 14 DNS roll foam

4. Layer 10 – 40 Gr M2 Tela

5. Layer 12 cm foam with 50 DNS density

6. Layer 10 – 40 gr/m² interlining

7. Layer 2.20 mm for singles – 2.38 mm for doubles Hercules mattress spring (14 cm)

8. Layer Fabric

Toplam Yatak Yüksekliği 14 cm (± 1 cm)

Single Size Dimensions

90 x 190
90 x 200
100 x 200
120 x 200

Double Size Dimensions

140 x 190
140 x 200
150 x 200
160 x 200
180 x 200

Economic Yaylı

Only one side of this mattress is used. As the amount of comfort foam used in the mattress increases, the price also rises, so it is suitable for single-sided use only.



Fabric

Made from 18 weft materials. It belongs to the jacquard fabric category. It is more durable compared to knitted cotton fabrics.



Supportive Foam

In this model, 2 cm thick 50 DNS Bondex foam is used on only one side.

Quilted Fiber

In addition to the top and bottom fabrics of this model, the edge border fabric is also quilted with 90 gr/m² fiber on three sides.





Economic Yaylı

Technical Details



1. Layer Fabric
2. Layer 90 gr/m² density Thermobond fiber
3. Layer 14 gr/m² density interlining
4. Layer 2 cm Bondex foam with 50 DNS/m² density
5. Layer 1000 gr/m² density hard felt (0.5 cm)
6. Layer 2.20 mm Hercules spring for single beds, 2.38 mm for double beds (14 cm)
7. Layer 1000 gr/m² density hard felt (0.5 cm)
8. Layer 14 gr/m² density interlining
9. Layer 90 gr/m² density Thermobond fiber
10. Layer Fabric

Total Mattress Height	17 cm (± 1 cm)
Single Size Dimensions	*2.20 mm thickness. "Single users can use it with confidence."
	90 x 190 90 x 200 100 x 200 120 x 200
Double Size Dimensions	*2.38 mm thickness. "Double users can use it with confidence."
	140 x 190 140 x 200 150 x 200 160 x 200 180 x 200
Number of Mattress Springs	
	90 X 190 (8 X 23) – 2.20 mm Bonel (Single Size)
	90 X 200 (8 X 24) – 2.20 mm Bonel (Single Size)
	100 X 200 (9 X 24) – 2.20 mm Bonel (Single Size)
	120 X 200 (12 X 24) – 2.20 mm Bonel (Wide Single Size)
	140 X 190 (12 X 24) – 2.38 mm Hercules (Double Size)
	140 X 200 (12 X 25) – 2.38 mm Hercules (Double Size)
	150 X 200 (13 X 25) – 2.38 mm Hercules (Double Size)
	160 X 200 (14 X 25) – 2.38 mm Hercules (Double Size)
	180 X 200 (16 X 25) – 2.38 mm Hercules (Wide Double Size)

Masaj Terapi

This type of mattress allows you to experience maximum sinking sensation. It has the same features as 5-star hotel mattresses. It is one of the "MOST PREFERRED" mattress models in Europe and America.



Fabric

The simplicity of white stands out. The roll foam and fiber inside the quilted fabric provide a soft feeling.

Pocket Spring

Differences of pocket springs from traditional spring mattresses are briefly outlined below. Each pocket spring is attached to others only by adhesive, providing an "INDEPENDENT MOTION" feature. These independently functioning pocket springs are more "DURABLE" compared to traditional spring mattresses. In a pocket spring mattress, when one partner moves or turns, the other person is affected to a "MINIMUM" extent. Compared to traditional spring mattresses, it is "SOFTER." In the USA and Europe, pocket spring mattresses are "PREFERRED" much more than traditional spring mattresses. They have the same features as mattresses used in "5-star hotel" concepts.



Supportive Foam

In the hidden pad section of this model, 2 cm thick 32 DNS foam and 3 cm Visco foam are preferred. On the bottom surface of the mattress, 2 cm thick 40 DNS foam is used. This results in a firmness difference of 10% to 15% between the two sides of the mattress. The high-density 40 DNS foam evenly distributes the weight applied on the mattress across its entire surface.

Quilted Foam

In Masaj Terapi, the quilted foam on the top surface has made the patterns much more distinct. The foam inside the quilting provides a softness that will make you feel comfortable.





Masaj Terapi

Technical Details



- | | |
|-----|--|
| 1. | Layer Fabric |
| 2. | Layer 90 gr/m² density Thermobond fiber |
| 3. | Layer 1.5 cm roll foam with 14 DNS density |
| 4. | Layer 14 gr/m² density interlining |
| 5. | Layer 3 cm Visco foam with 32 DNS/m² density |
| 6. | Layer 2 cm foam with 50 DNS/m² density |
| 7. | Layer Pocket Spring 6 Cm |
| 8. | Layer 2 cm foam with 50 DNS/m² density |
| 9. | Layer 14 gr/m² density interlining |
| 10. | Layer 90 gr/m² density Thermobond fiber |
| 11. | Layer Fabric |

Total Mattress Height 25 cm (± 2 cm)

Single Size Dimensions
90 x 190
90 x 200
100 x 200
120 x 200

Double Size Dimensions
140 x 190
140 x 200
150 x 200
160 x 200
180 x 200

Natural Visco

This product provides the highest level of sinking sensation. It features a magnificent harmony of white and gray. A 6 cm layer of 32 DNS visco foam is used. It is a comfort-focused product designed for long-term use.



Fabric

The simplicity of white stands out. The roll foam and fiber inside the quilted white cotton fabric provide a soft touch sensation. A meeting of simplicity...



Supportive Foam

The 50 DNS Bondex foam used in our Natural Visco model has a height of 12 cm and a firmness level of 10/7. It supports the spine and the entire body evenly, providing a healthy sleep experience.





Natural Visco

Technical Details



1. Layer Fabric

2. Layer 90 gr/m² density Thermobond fiber

3. Layer 1.5 cm roll foam density

4. Layer 14 gr/m² density interlining

5. Layer 6 cm Visco layer with 32 DNS/m² density

6. Layer 12 cm Bondex foam with 50 DNS/m² density

7. Layer 14 gr/m² density interlining

8. Layer 90 gr/m² density Thermobond fiber

9. Layer Fabric

Total Mattress Height 20 cm (± 1 cm)

Single Size Dimensions

90 x 190

90 x 200

100 x 200

120 x 200

Double Size Dimensions

140 x 190

140 x 200

150 x 200

160 x 200

180 x 200

Saracens

It has a high load-bearing capacity. The linen fabric of our product is specially produced in Gaziantep. Due to the variety and abundance of materials used, it is a heavy mattress. Both sides of the mattress have different firmness levels. It is suitable for double-sided use.



Fabric

The fabric known as "Vizon" is made from linen. Its density is 200 grams per m². It is specially produced for us as a boutique in Gaziantep. The linen fabric used in this model is more durable compared to its counterparts. In hot weather, its large porous structure allows the body to breathe and stay cool. Linen fabrics are a long-lasting type of fabric. They have minimal elasticity and are resistant to staining. It is a fabric type with a natural appearance.



Pocket Spring

The differences between pocket springs and traditional spring mattresses are briefly outlined below. Each pocket spring is attached to other pocket springs only by adhesive, providing an "INDEPENDENT MOVEMENT" feature. These independently operating pocket springs are more "DURABLE" compared to traditional spring mattresses. In a pocket spring mattress, when one partner turns or moves, the other person is affected to a "MINIMUM" extent. In the USA and Europe, pocket spring mattresses are "PREFERRED" much more than traditional spring mattresses. They share the same features as mattresses used in "5-Star Hotel" concepts.





Saracens

Technical Details



1. Layer: 200 gr/m² Special Linen Fabric, Produced in Gaziantep
2. Layer: 90 gr/m² Density Thermobond Fiber
3. Layer: 1.5 cm/m² Density Rolled Foam
4. Layer: 14 gr/m² Density Interlining
5. Layer: 50 DNS/m² Density Bondex Foam 2 cm
6. Layer: 50 DNS/m² Density Bondex Foam 2 cm
7. Layer: 1000 gr/m² Density Hard Felt (0.5 cm)
8. Layer: 1000 gr/m² Density Hard Felt (0.5 cm)
9. Layer: 2.00 mm 16 cm Pocket Spring with a Coil Count Above World Standards
10. Layer 2 cm Bonde x Foam with 50 Dns/m² Density
11. Layer 2 cm Bonde x Foam with 50 Dns/m² Density
12. Layer 14 g/m² Density Interlining (Tela)
13. Layer 1.5 cm/m² Density Rolled Foam
14. Layer 90 gr/m² Density Thermobond Fiber
15. Layer 200 gr/m² Gaziantep-Made Special Linen Fabric

Total Mattress Height 28 cm (± 1 cm)

Single Size Dimensions

90 x 190
90 x 200
100 x 200
120 x 200

Double Size Dimensions

140 x 190
140 x 200
150 x 200
160 x 200
180 x 200

Pocket Spring Features

90 X 190	Pocket Spring 2.00 mm 15x30 – 16 cm (450 Springs)
90 X 200	Pocket Spring 2.00 mm 15x32 – 16 cm (480 Springs)
100 X 200	Pocket Spring 2.00 mm 17x32 – 16 cm (544 Springs)
120 X 200	Pocket Spring 2.00 mm 20x32 – 16 cm (640 Springs)
140 X 190	Pocket Spring 2.00 mm 24x30 – 16 cm (720 Springs)
140 X 200	Pocket Spring 2.00 mm 24x32 – 16 cm (768 Springs)
150 X 200	Pocket Spring 2.00 mm 25x32 – 16 cm (800 Springs)
160 X 200	Pocket Spring 2.00 mm 27x32 – 16 cm (864 Springs)
180 X 200	Pocket Spring 2.00 mm 27x32 – 16 cm (960 Springs)

Ekonomik Sünger

Compared to spring mattresses, foam mattresses are frequently preferred, especially in Europe and America. The reason is that foam mattresses are much more durable. Common issues seen with spring mattresses, such as spring protrusion or foam pool collapse, do not occur. Based on this, the mattress is made of foam. For this reason, with its 14 cm height, it offers the same performance as a 30 cm high spring mattress.

Fabric

This fabric, known as "Vizon," is made of linen. Its density is 200 grams per square meter. It is specially produced for us as a boutique fabric in the city of Gaziantep. The linen fabric used in this model is more durable than its counterparts. In hot weather, its large-pored structure allows the body to breathe and stay cool. Linen fabrics are a long-lasting type of fabric. They have almost no elasticity and are resistant to staining. It is a fabric type with a natural appearance.



Pocket Spring

The differences between pocket springs and traditional spring mattresses are briefly outlined below. Each pocket spring is connected to the others only with adhesive, which provides an "INDEPENDENT MOVEMENT" feature. These independently functioning pocket springs are more "DURABLE" compared to traditional spring mattresses. In a pocket spring mattress, when one partner turns or moves, the other is affected to a "MINIMUM" degree. Pocket spring mattresses are much more "PREFERRED" than traditional ones in the USA and EUROPE. They share the same features as mattresses used in "5-STAR HOTEL" concepts.





Ekonomik Sünger

Technical Details



1. Layer: Special Linen Fabric Produced in Gaziantep, 200 gr/m²

2. Layer: Thermobond Fiber with a Density of 90 gr/m²

3. Layer: 1.5 cm Thick Roll Foam with a Density of 1.5 cm/m²

4. Layer: Interlining Fabric with a Density of 14 gr/m²

5. Layer: 2 cm Thick Bonde x Foam with a Density of 50 Dns/m²

6. Layer: 2 cm Thick Bonde x Foam with a Density of 50 Dns/m²

7. Layer: 0.5 cm Thick Hard Felt with a Density of 1000 gr/m²

8. Layer: 0.5 cm Thick Hard Felt with a Density of 1000 gr/m²

9. Layer: 2.00 mm, 16 cm Pocket Springs with Coil Count Above World Standards

10. Layer: 2 cm Bondex foam with a density of 50 DNS

11. Layer: 2 cm Bondex foam with a density of 50 DNS

12. Layer: 14 g/m² density interlining fabric (Tela)

13. Layer: 1.5 cm thickness, density roll foam

14. Layer: 90 gr/m² density Thermobond fiber

15. Layer: m²/200 gr Special Linen Fabric, Gaziantep Production

Total Mattress Height 28 cm (± 1 cm)

Single Size Dimensions

90 x 190
90 x 200
100 x 200
120 x 200

Double Size Dimensions

140 x 190
140 x 200
150 x 200
160 x 200
180 x 200

Pocket Spring Features

90 X 190	Pocket Spring 2.00 mm 15*30 – 16 cm (450 Springs)
90 X 200	Pocket Spring 2.00 mm 15*32 – 16 cm (480 Springs)
100 X 200	Pocket Spring 2.00 mm 17*32 – 16 cm (544 Springs)
120 X 200	Pocket Spring 2.00 mm 20*32 – 16 cm (640 Springs)
140 X 190	Pocket Spring 2.00 mm 24*30 – 16 cm (720 Springs)
140 X 200	Pocket Spring 2.00 mm 24*32 – 16 cm (768 Springs)
150 X 200	Pocket Spring 2.00 mm 25*32 – 16 cm (800 Springs)
160 X 200	Pocket Spring 2.00 mm 27*32 – 16 cm (864 Springs)
180 X 200	Pocket Spring 2.00 mm 27*32 – 16 cm (960 Springs)

Grey

It will be the choice of traditional spring mattress lovers and those seeking simplicity and elegance in the bedroom. Without deviating from the price-performance balance emphasized in our products, we offer you a simple, stylish, and high-quality mattress at an optimal level.



Fabric

The simplicity of white stands out. The quilted fabric contains rolled foam and fiber, providing a soft touch sensation.



Supportive Foam

Bu modelimizin her iki tarafında da 2 cm kalınlığında 50 DNS Bonde x sünger tercih edilmiştir. Bu sayede yatağın her iki yönü de birbirine eşit sertliktedir . Kullanılan 50 DNS yüksek yoğunlukta Bonde x sünger sayesinde yatağın üstüne binen yükü, yatağın tamamına eşit şekilde dağıtmaktadır . Yatağın her iki yönü de gönül rahatlığı ile kullanılabilir .

Quilted Foam

In the Grey model, the quilted foam on the top surface makes the patterns much more distinct. The foam inside the quilting provides a softness that will make you feel comfortable.



Grey

Technical Details



1. Layer Fabric

2. Layer 90 gr/m² Density Thermobond Fiber

3. Layer 1.5 cm Thickness Roll Foam with Density of 1.5 cm/m²

4. Layer Nonwoven Fabric with 14 gr/m² Density

5. Layer Bonde x Foam with 50 Dns/m² Density, 2 cm Thickness

6. Layer Hard Felt with 1000 gr/m² Density (0.5 cm Thickness)

7. Layer: Single Beds - 2.20 mm / Double Beds - 2.38 mm Herkül Mattress Spring (14 cm)

8. Layer: 1000 gr/m² Density Hard Felt (0.5 cm)

9. Layer: 50 Dns/m² Density Bonde x Foam 2 cm

10. Layer: 14 gr/m² Density Interlining

11. Layer: 90 gr/m² Density Thermobond Fiber

12. Layer: Fabric

Total Mattress Height 21 cm (± 1 cm)

Single Size Dimensions

90 x 190
90 x 200
100 x 200
120 x 200

Double Size Dimensions

140 x 190
140 x 200
150 x 200
160 x 200
180 x 200

Lannister

This model, with a height of 28 cm, is among our tallest mattresses. It has a high load-bearing capacity. Due to the variety and abundance of materials used, it is a heavy mattress. It is firmer compared to pocket spring mattresses. Each side of the mattress has a different firmness level. It is suitable for double-sided use.



Felt

On the top surface of this model, 2000 gr/m² medium firmness felt is used directly above the pocket springs, making this side firmer compared to the other bottom side. Therefore, one side of our mattress has a firmness of 10/6 or 10/6.5, while the other bottom side has a firmness of 10/5.5. Both sides offer different sleep comfort experiences.

Quilted Foam

In our product named Lannister, the quilted foam used on both surfaces makes the patterns much more pronounced. At the same time, the foam inside the quilting provides a soft touch that will make you feel comfortable.

Pocket Spring

The differences between pocket springs and traditional spring mattresses are briefly outlined below. Each pocket spring is attached to other pocket springs only by adhesive, providing the feature of "INDEPENDENT MOTION." These individually independent pocket springs are more "DURABLE" compared to traditional spring mattresses. In a pocket spring mattress, when one partner turns or moves, the other person is affected to a "MINIMUM" degree. In the USA and Europe, pocket spring mattresses are much more "PREFERRED" compared to traditional spring mattresses. They share the same features as mattresses used in "5-Star Hotel" concepts.

Supportive Foam

On one side of this model, 4 cm thick 50 DNS Bondex foam has been used. On the bottom side of the mattress, 4 cm thick 50 DNS Bondex foam is also preferred. The high-density 50 DNS Bondex foam evenly distributes the weight applied on the mattress across the entire surface. Both sides of the mattress can be used with confidence.

Fabric

Our fabric, known today by the new trend name "Houndstooth," is a type of linen fabric. Its density is 200 grams per square meter. It is specially produced for us in a boutique style in Gaziantep. The linen fabric used in this model is more durable compared to its equivalents. In hot weather, its large pore structure allows the body to breathe and stay cool. Linen fabrics are a long-lasting type of fabric. Its elasticity is minimal to negligible. It does not stain easily. It is a fabric type with a natural appearance.



Lannister

Technical Details



1. Layer: Special Linen Fabric produced in Gaziantep, 200 gr/m² density
2. Layer of Thermobond Fiber with a density of 90 gr/m²
3. Layer of Roll Foam with a thickness of 1.5 cm/m² density
4. Layer of Interlining Fabric with a density of 14 gr/m²
5. Layer 2 cm Bondex Foam with 50 kg/m³ Density
6. Layer 2 cm Bondex Foam with 50 kg/m³ Density
7. Layer 0.5 cm Hard Felt with 1000 gr/m² Density
8. Layer: 0.5 cm Hard Felt with 1000 gr/m² Density
9. Layer 16 cm Pocket Springs, 2.00 mm, exceeding world standards in coil count.
10. Layer 2 cm Bondex Foam with 50 kg/m³ Density
11. Layer 2 cm Bondex Foam with 50 kg/m³ Density
12. Layer 14 gr/m² Density Interlining
13. Layer of Roll Foam with a thickness of 1.5 cm/m² density
14. Layer 90 gr/m² Density Thermobond Fiber
15. Layer 200 gr/m² Special Linen Fabric, Produced in Gaziantep

Total Mattress Height 28 cm (± 1 cm)

Single Size Dimensions

90 x 190
90 x 200
100 x 200
120 x 200

Double Size Dimensions

140 x 190
140 x 200
150 x 200
160 x 200
180 x 200

Pocket Spring Features

90 X 190 Pocket Spring 2.00 mm 15*30 - 16 cm (450 Springs)
90 X 200 Pocket Spring 2.00 mm 15*32 - 16 cm (480 Springs)
100 X 200 Pocket Spring 2.00 mm 17*32 - 16 cm (544 Springs)
120 X 200 Pocket Spring 2.00 mm 20*32 - 16 cm (640 Springs)
140 X 190 Pocket Spring 2.00 mm 24*30 - 16 cm (720 Springs)
140 X 200 Pocket Spring 2.00 mm 24*32 - 16 cm (768 Springs)
150 X 200 Pocket Spring 2.00 mm 25*32 - 16 cm (800 Springs)
160 X 200 Pocket Spring 2.00 mm 27*32 - 16 cm (864 Springs)
180 X 200 Pocket Spring 2.00 mm 27*32 - 16 cm (960 Springs)

Kuş Tüyü Ped

If you find your current mattress too firm and don't want to replace it, simply lay this product on top to add softness. It can also be comfortably used on sofas and couches for your guests, or even as a floor mattress.



Support Foam

In this model, a 6 cm thick, 24 DNS (Density) feather-soft, extra-soft foam has been chosen. The 24 DNS high-density foam used effectively distributes the load on the mattress evenly across its entire surface. Both sides of the mattress can be used with complete peace of mind.



Fabric

Its appealing texture offers a visual feast for the eye. The fabric used in the Feather-Soft Pillow Top Mattress Pad creates a cohesive unit with specially quilted rolled foam and fiber.

Kuş Tüyü

Technical Details



Hard
10
9
8
7
6
5
4
3
2
1
Soft

Total Pad Height: 8 cm (± 1 cm)

1. Layer Fabric
2. Layer 90 gr/m² Density Thermobond Fiber
3. Layer 1.5 cm Rolled Foam / 14 DNS
4. Layer 4 gr/m² Density Interlining
5. Layer 6 cm Feather-Soft Foam with 24 DNS Density)
6. Layer 4 gr/m² Density Interlining
7. Layer 90 gr/m² Density Thermobond Fiber
8. Layer Fabric

Persia Ped

Foam mattresses are frequently preferred over spring mattresses, especially in Europe and America. The reason for this is that foam mattresses are much more durable. Problems commonly experienced with spring mattresses, such as spring sagging, foam collapse, etc., are not observed in foam mattresses. Based on this, Dr. Therapy mattresses are manufactured from foam. For this reason, with a height of 14 cm, they offer the same performance as spring mattresses with a height of 30 cm.



Support Foam

In this model, a 12 cm thick, 50 DNS (Density) foam has been chosen. The 50 DNS high-density foam used effectively distributes the load on the mattress evenly across its entire surface. Both sides of the mattress can be used with complete peace of mind. In Dr. Therapy, the quilted foam and fiber on the top surface make the patterns much more pronounced. Additionally, the foam and fiber within the quilting will provide a soft feel, ensuring comfort.



Fabric

It is made from Jacquard fabric, which is more durable than knitted fabrics. Jacquard fabric does not pill, bulge, or fray.





Saracens Ped

Technical Details



Hard
10
9
8
7
6
5
4
3
2
1
Soft

1. Layer: Fabric

2. Layer: Thermobond Fiber 90 Gr / m²

3. Layer: 1.5 cm 14 DNS (Rolled Foam)

4. Layer: 10 - 40 Gr/m² Interlining

5. Layer: 12 cm Foam with 50 DNS Density

6. Layer: 10 - 40 Gr/m² Interlining

7. 14 cm Hercules Mattress Spring - 2.20 mm for Single Beds - 2.38 mm for Double Beds

8. Layer: Fabric

Total Mattress Height 14 cm (± 1 cm)

Single Size Dimensions

90 x 190
90 x 200
100 x 200
120 x 200

Double Size Dimensions

140 x 190
140 x 200
150 x 200
160 x 200
180 x 200

* It has a wall thickness of 2.38 mm
"Can be used comfortably by two people."

Bamboo Visco Ped

With its visco foam content, you will experience an incredibly soft texture and a full "sinking in" feeling. Both sides have different firmness levels, allowing you to experience two distinct sleep comforts.

Support Foam

In the lower part of this model, a 2 cm thick, 50 DNS (Density) Bondex foam has been chosen. The 50 DNS high-density Bondex foam used effectively distributes the load on the mattress evenly across its entire surface. Both sides of the mattress can be used with complete peace of mind.

Fabric

It is produced from cotton with a special 220 gr/m² weave. The appealing texture of the bamboo pattern offers a visual feast for the eye. In the Bamboo Visco Pillow Top Mattress Pad, the fabric creates a cohesive unit with specially quilted rolled foam and fiber.



Bamboo Visco Ped

Technical Details



Hard
10
9
8
7
6
5
4
3
2
1
Soft

1. Layer: 220 gr/m² Cotton Bamboo Knitted Fabric

2. Layer: 90 gr/m² Density Thermobond Fiber

3. Layer: 0,8 cm/m² Rolled Foam

4. Layer: 14 gr/m² Density Interlining

5. Layer: 2 cm Bondex Foam with 50 DNS/m² Density

6. Layer: 3 cm Visco Foam with 50 DNS/m² Density

7. Layer: 14 gr/m² Density Interlining

8. Layer: 0,8 cm/m² Rolled Foam

9. Layer: 90 gr/m² Density Thermobond Fiber

10. Layer: 220 gr/m² Cotton Bamboo Knitted Fabric

Total Mattress Height 8 cm (± 1 cm)

Single Size Dimensions

90 x 190
90 x 200
100 x 200
120 x 200

Double Size Dimensions

140 x 190
140 x 200
150 x 200
160 x 200
180 x 200

Natural Ped

Its ergonomic design allows for easy storage and safekeeping immediately after use.



Support Foam

In this model, a 4 cm thick, 50 DNS (Density) Bondex foam has been chosen. This ensures that both sides of the mattress have equal firmness. The 50 DNS high-density Bondex foam used effectively distributes the load on the mattress evenly across its entire surface. Both sides of the topper can be used with complete peace of mind.



Fabric

The simplicity of white is highlighted. The rolled foam and fiber content within the quilted fabric provide a soft touch.



Natural Ped

Technical Details



- | | |
|----|--|
| 1. | Layer: Fabric |
| 2. | Layer: 90 gr/m² Density Thermobond Fiber |
| 3. | Layer: 1,5 cm/m2 Rolled Foam |
| 4. | Layer: 14 gr/m² Density Interlining |
| 5. | Layer: 4 cm Bondex Foam with 50 DNS/m² Density |
| 6. | Layer: 14 gr/m² Density Interlining |
| 7. | Layer: 90 gr/m² Density Thermobond Fiber |
| 8. | Layer: Fabric |

Ice Berg Ped

If you find your current mattress too firm and don't want to replace it, simply lay this product on top to add softness. It is suitable for double-sided use. Due to the variety and quantity of materials used in the product, it is a heavy topper.

Support Foam

In this model, a 6 cm thick, 24 DNS (Density) feather-soft, extra-soft foam has been chosen. The 24 DNS high-density foam used effectively distributes the load on the mattress evenly across its entire surface. Both sides of the mattress can be used with complete peace of mind.

Fabric

This fabric, known as "Vizon", is made of linen. Its square meter density is 200 grams. It is custom-produced for us as a boutique item in the city of Gaziantep. The linen fabric used in this model is more durable than its counterparts. In hot weather, its coarse-pored structure allows the body to breathe and stay cool. Linen fabrics are a long-lasting type of fabric. Their elasticity is almost non-existent. They are stain-resistant. It is a type of fabric with a natural appearance.



Ice Berg Ped

Technical Details



1. Layer: Gaziantep Produced Special Linen Fabric 200 grams/m²

2. Layer: 90 gr/m² Density Thermobond Fiber

3. Layer: 1.5 cm Rolled Foam / 14 DNS

4. Layer: 14 gr/m² Density Interlining

5. Layer: 6 cm Feather-Soft Pink Foam with 24 DNS/m² Density

6. Layer: 14 gr/m² Density Interlining

7. Layer: 1.5 cm Rolled Foam / 14 DNS

8. Layer: 90 gr/m² Density Thermobond Fiber

9. Layer: Gaziantep Produced Special Linen Fabric 200 grams/m²

Total Mattress Height 9 cm (± 1 cm)

24 DNS Feather-Soft Foam

Unlike other 24 DNS foams on the market, this foam is produced in pink and white colors. Additionally, it has been specially designed to be extra soft. Its elasticity is greater than its counterparts. Furthermore, it is more durable and long-lasting than its counterparts.



www.berfa.com.tr



info@berfa.com.tr



+90 (530) 152 00 38



Berfa Group Hacılar Organize Sanayi Bölgesi
Karpuzsekisi Mahallesi 24. Cadde No: 68
Hacılar/Kayseri / TURKEY